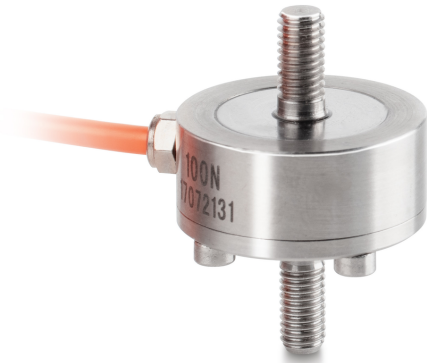


# KERN CO 10-Y3

# KERN

Miniature cylindrical load cell made from stainless steel



## Category

Brand	Sauter
Product category	Measuring cell
Product group	Load/force measuring cell
Product family	CO Y3

## Measuring System

Weighing capacity [Max]	10 kg
Load cell connection	4-wire
Load cell OIML class	G2
Load cell - characteristic value - nominal	2 mV/V
Load cell - Combined error	0,1%
Measuring applications	force mass
Load cell - Input resistance - nominal	800 $\Omega$
Load cell - Output resistance - nominal	800 $\Omega$
Load cell - Isolation resistance - [Min]	5000 M $\Omega$
Load cell - Recommended excitation voltage [Min]	10 V
Load cell - Recommended excitation voltage [Max]	15 V
Measuring range force [Max] (N)	100 N
Directions of force	tension compression

## Approval

CE mark	✓
---------	---

## Construction

Design	Tension-/compression rod
Material	stainless steel
Cable length	2 m
Mounting - force application	External thread M5
Mounting - force dissipation	External thread M5

## Functions

IP protection - complete device	IP66
---------------------------------	------

## Environmental conditions

Use temperature [Min]	0 °C
Use temperature [Max]	40 °C

## Packing & Shipping

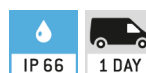
Readability force [d] (N)	1 d
Dimensions packaging (W×D×H)	150×105×40 mm
Net weight	0,037 kg
Shipping method	Parcel service
Net weight approx.	0,05 kg
Gross weight approx.	0,10 kg
Shipping weight	0,1 kg

## Services (optional)

Article number for DAkkS calibration (tensile force)	963-161V
Article number for DAkkS calibration (compressive force)	963-261V
Article number for DAkkS calibration (tensile force/ compressive force)	963-361V

## Pictograms

### STANDARD



### OPTION

